

anti- γ Synuclein

| | |
|---------------|----------------------------|
| Orders | orders@younginfrontier.com |
| WEB | www.younginfrontier.com |
| TEL | +82-2-2140-3300 |
| FAX | +82-2-2140-3310 |

Overview

Product Name : anti- γ Synuclein

Product Type : Primary Antibodies

Description : Rabbit polyclonal to γ Synuclein

Product Information

Immunogen : Recombinant human protein purified from E.coli (His- γ Synuclein)

Clonality : Polyclonal Antibody

Host : Rabbit

Isotype / Subtype : IgG

Application(추가정보) : WB (1:2,000)

Reactivity : Human

Positive control : HT-29 cells

Storage : Store for 1 year at -20°C from date of shipment

Composition : HEPES with 0.15M NaCl, 0.01% BSA, 0.03% sodium azide, and 50% glycerol

Conjugation unconjugated

Target

Background : Synuclein is a small, soluble protein primarily expressed in neural tissue. The synuclein family includes three known proteins: α -synuclein, β -synuclein, and γ -synuclein. γ -Synuclein is a synuclein protein found primarily in the peripheral nervous system (in primary sensory neurons, sympathetic neurons, and motor neurons) and retina. γ -Synuclein expression in breast tumors is a marker for tumor progression.

Background reference : 1) Irvine GB et al., 2008, Mol Med In press
2) Wakabayashi K et al., 2007, Neuropathology 27(5):494-506
3) Beyer K., Acta Neuropathol 112(3):237-251
4) Bruening W et al., 2000, Cancer 88(9):2154-2163

Research area : Neuroscience

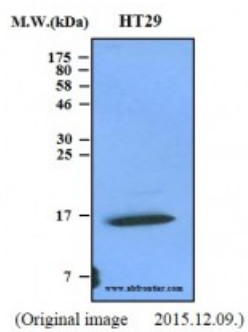
Database link - GenelD 6623

Database link - SwissProt no. O76070

Function : Plays a role in neurofilament network integrity. May be involved in modulating axonal architecture during development and in the adult. In vitro, increases the susceptibility of neurofilament-H to calcium-dependent proteases. May also function in modulating the keratin network in skin. Activates the MAPK and Elk-1 signal transduction pathway.

Cellular location : Cytoplasm

Image



Western-blot Analysis
Lane 1 : HT29 Cell Lysate