

anti-Lactoferrin

Orders	orders@younginfrontier.com
WEB	www.younginfrontier.com
TEL	+82-2-2140-3300
FAX	+82-2-2140-3310

Overview

Product Name : anti-Lactoferrin

Product Type : Primary Antibodies

Description : Rabbit polyclonal to Lactoferrin

Product Information

Immunogen : Recombinant human protein purified from E.coli

Clonality : Polyclonal Antibody

Host : Rabbit

Isotype / Subtype : IgG

Application(추가정보) : WB (1:2,000)

Reactivity : Human

Positive control : Human Lactoferrin purified from first breast milk

Storage : Store for 1 year at -20°C from date of shipment

Composition : HEPES with 0.15M NaCl, 0.01% BSA, 0.03% sodium azide, and 50% glycerol

Conjugation unconjugated

Target

Background : Lactoferrin(Lf), one of transferrin family, is found in external fluids, including milk and mucosal secretions, and prominent components of the secondary granules of neutrophils. Lf consists of a single polypeptide chain (approximately 80 kDa) folded into two structurally homologous lobes, each of which can reversibly bind one ferric ion (Fe^{3+}). Lf plays a central role in iron metabolism and host defense system against microbial infection.

Background reference : 1) Farnaud, S. and Evans, R.W. (2003) Mol. Immunol. 40, 395-405
2) Baker, H.M. et al. (2003) Proc. Natl. Acad. Sci. USA 100, 3579-3583
3) Appelmelk, B.J. et al. (1994) Infect. Immun. 62, 2628-2632

Research area : Serum Protein Disease Marker

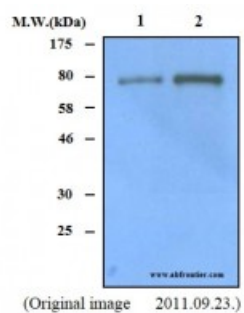
Database link - GenelD 4057

Database link - SwissProt no. P02788

Function : Transferrins are iron binding transport proteins which can bind two Fe^{3+} ions in association with the binding of an anion, usually bicarbonate. Lactotransferrin has antimicrobial activity which depends on the extracellular cation concentration. Lactoferroxins A, B and C have opioid antagonist activity. Lactoferroxin A shows preference for mu-receptors, while lactoferroxin B and C have somewhat higher degrees of preference for kappa-receptors than for mu-receptors. The lactotransferrin transferrin-like domain 1 functions as a serine protease of the peptidase S60 family that cuts arginine rich regions. This function contributes to the antimicrobial activity

Cellular location : Secreted

Image



Western-blot Analysis

Lane 1 : Lactoferrin Protein 20ng

Lane 2 : Lactoferrin Protein 50ng



YOUNG IN FRONTIER

For Research Use Only. Not For Diagnostic Or Therapeutic Use.

244, Beotkkot-ro, Geumcheon-gu, Seoul, 08513, Republic of Korea