

anti- β -Actin(N-term)

Orders	orders@younginfrontier.com
WEB	www.younginfrontier.com
TEL	+82-2-2140-3300
FAX	+82-2-2140-3310

Overview

Product Name : anti- β -Actin(N-term)

Product Type : Primary Antibodies

Description : Rabbit polyclonal to β -Actin(N-term)

Lot No : SMY00-01

Product Information

Immunogen : Synthetic peptide (KLH coupled) corresponding to N-terminal residues of Human beta actin.

Clonality : Polyclonal Antibody

Host : Rabbit

Isotype / Subtype : IgG

Application(추가정보) : WB (0.2 ug/ml)

Reactivity : Human, Mouse, Rat

Positive control : HeLa cells

Concentration : 1 mg/ml

Storage : Store for 1 year at -20°C from date of shipment

Purification : Protein A column

Composition : HEPES with 0.15M NaCl, 0.01% BSA, 0.03% sodium azide, and 50% glycerol

Conjugation unconjugated

Form : Liquid

Target

Background : Actin is an abundant cytoskeletal protein found in all mammalian cells. Six distinct actin isotypes have been identified in mammalian cells. Each is encoded by a separated gene and is expressed in a developmentally regulated and tissue-specific manner. α and β -cytoplasmic actins are expressed in a wide variety of cells. Whereas, expression of α -skeletal, α -cardiac, α -vascular and γ -enteric actins are more restricted to specialized muscle cell type. Actin's filaments form part of the cytoskeleton and play essential roles in regulating cell shape and movement.

Background reference : 1) True, L.D. Atlas of Diagnostic Immunopathology. 1990 Gower Medical Publishing. N.Y. 6.5.
2) Otey C et al. J. Cell Biol. 1986; vol.102: pp.1726-1737
3) Reddy S et al. J. Biol. Chem. 1990; vol.262: pp.1863-1867

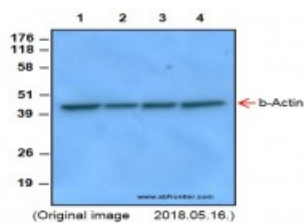
Research area : Cytoskeleton

Database link - SwissProt no. P60709

Database link - GeneID 60

Function : Actins are highly conserved proteins that are involved in various types of cell motility and are ubiquitously expressed in all eukaryotic cells.

Cellular location : Cytoplasm



Western-blot Analysis

Lane 1 : HeLa Cell Lysate

Lane 2 : 293T Cell Lysate

Lane 3 : PC12 Cell Lysate

Lane 4 : NIH3T3 Cell Lysate

Experimental note

Primary antibody usage

: LF-PA0207 Anti-Beta Actin (N-Term) Antibody 0.2ug/mL for O/N, 4°C

Secondary antibody usage : LF-SA8002 Goat Anti-Rabbit IgG 1:5000 for 1Hr, RT

Film exposure time : 1min.



For Research Use Only. Not For Diagnostic Or Therapeutic Use.
244, Beotkkot-ro, Geumcheon-gu, Seoul, 08513, Republic of Korea