

anti-Human IgA (47C12)

Orders	orders@younginfrontier.com
WEB	www.younginfrontier.com
TEL	+82-2-2140-3300
FAX	+82-2-2140-3310

Overview

Product Name : anti-Human IgA (47C12)

Product Type : Primary Antibodies

Description : Mouse monoclonal to Human IgA

Lot No : MDE00

Product Information

Immunogen : Protein purified from Human plasma

Clonality : Monoclonal Antibody

Clone No : 47C12

Host : Mouse

Isotype / Subtype : IgG1 / κ

Application(추가정보) : E, WB (0.5 μ g/mL), IP (1.0 μ g), IHC-P

Reactivity : Human

Positive control : Human plasma

Concentration : 1 mg/ml

Storage : Store for 1 year at -20°C from date of shipment

Purification : Protein G purified

Composition : HEPES with 0.15M NaCl, 0.01% BSA, 0.03% sodium azide, and 50% glycerol

Conjugation unconjugated

Target

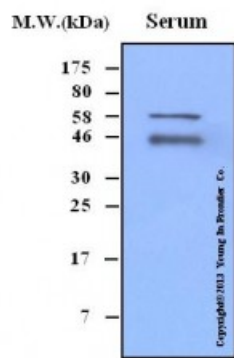
Background : IgA represents about 15% to 20% of immunoglobulins in the blood, although it is primarily secreted across the mucosal tract into the stomach and intestines. This prevents microbes from binding to epithelial cells in the digestive and respiratory tracts. It does not activate complement, and opsonises only weakly. It exists in two forms, IgA1 (90%) and IgA2 (10%) that differ in the structure. IgA1 is composed like other proteins, however in IgA2 the heavy and light chains are not linked with disulfide but with noncovalent bonds. IgA1 is found in serum and made by bone marrow B cells, however IgA2 is made by B cells located in the mucosae and has been found to secrete into, colostrum, maternal milk, tears and saliva. The IgA found in secretions represent dimeric form, linked by two additional chains, the J chain and the secretory chain. Decreased or absent IgA, termed selective IgA deficiency, can be a clinically significant immunodeficiency.

Background reference : 1) Grubb R. Exp Clin Immunogenet. 1995; vol.12(3): pp.191-7.
2) Stewart AK, Schwartz RS. Blood. 1994; vol.83(7): pp.1717-30.

Research area : Serum Protein Disease Marker

Database link - SwissProt no. P01877

Function : Ig alpha is the major immunoglobulin class in body secretions. It may serve both to defend against local infection and to prevent access of foreign antigens to the general immunologic system.



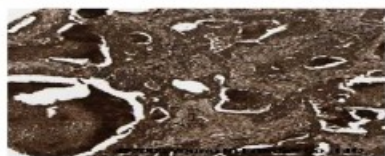
(Original image 2013.04.11.)

Immunoblot Analysis

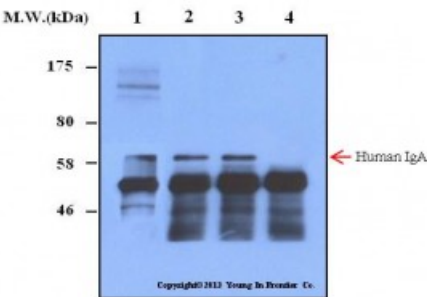
Lane 1 : Human Serum 0.1uL



IMMUNOHISTOCHEMICAL ANALYSIS of Human normal lung tissue (Formalin-Fixed Paraffin-Embedded)
Image courtesy of Human Protein Atlas(HPA)



IMMUNOHISTOCHEMICAL ANALYSIS of Human lung cancer tissue (Formalin-Fixed Paraffin-Embedded)
Image courtesy of Human Protein Atlas(HPA)



(Original image 2013.03.21.)

Immunoprecipitation Analysis

Lane 1 : Human Serum 1.0uL
Lane 2 : Precipitated from Human Serum 1uL using MA0165 2ug
Lane 3 : Precipitated from Human Serum 1uL using MA0165 5ug
Lane 4 : Precipitated from PBS using MA0165 5ug