

anti-CSPS (3F10)

Orders	orders@younginfrontier.com
WEB	www.younginfrontier.com
TEL	+82-2-2140-3300
FAX	+82-2-2140-3310

Overview

Product Name : anti-CSPS (3F10)

Product Type : Primary Antibodies

Description : Mouse monoclonal to CSPS

Product Information

Immunogen : Recombinant human protein purified from E.coli

Clonality : Monoclonal Antibody

Clone No : 3F10

Host : Mouse

Isotype / Subtype : IgG2b / κ

Application(추가정보) : IP (1-2 ul)

Reactivity : Mouse,Rat

Positive control : Mouse brain

Storage : Store for 1 year at -20°C from date of shipment

Purification : Ammonium sulfate precipitation

Composition : HEPES with 0.15M NaCl, 0.01% BSA, 0.03% sodium azide, and 50% glycerol

Conjugation unconjugated

Target

Background : The human Catecholamine-Sulfating Phenol Sulfotransferase (CSPS) is the only sulfotransferase that catalyses the sulfation of catecholamins, in particular the neurotransmitter dopamine, with high activity. CSPS is required for stimulation by Mn^{2+} of the sulfating activity and expressed in the human intestine, brain, platelet and other tissues. In the brain it may play a role in regulating the levels of dopamine. It also serves as a detoxifying function in the intestine, where it may detoxify potentially lethal dietary monoamines.

Background reference : 1) Pai,T.G. et al. (2003) J. Biol. Chem. 278, 1525-1532.
2) Pai,T.G. et al. (2002) J. Biol. Chem. 277,43813-43820.
3) Coughtrie, M.W.H. (2002) Pharmacogenomics J. 2, 297-308.

Research area : Neuroscience

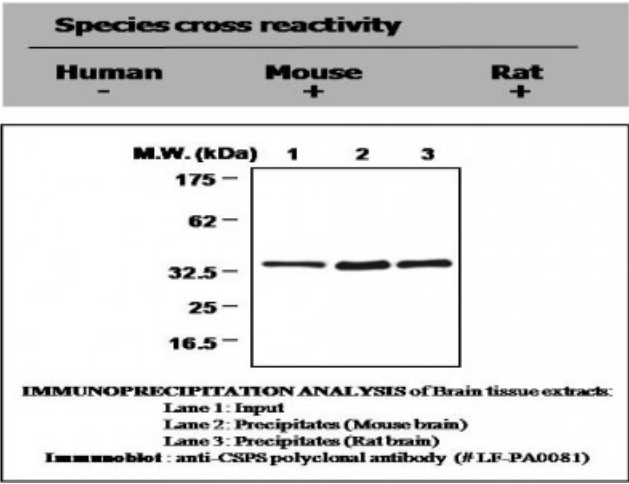
Database link - GenelD 6818

Database link - SwissProt no. P50224

Function : Catalyzes the sulfate conjugation of phenolic monoamines (neurotransmitters such as dopamine, norepinephrine and serotonin) and phenolic and catechol drugs.

Cellular location : Cytoplasm

Image



For Research Use Only. Not For Diagnostic Or Therapeutic Use.
244, Beotkkot-ro, Geumcheon-gu, Seoul, 08513, Republic of Korea